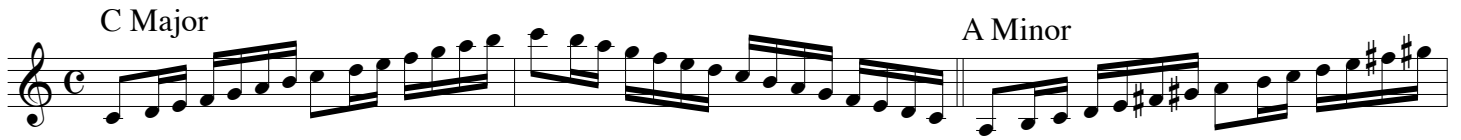


Scales—Level Three (Klosé)

C Major A Minor



This block contains the first two scales: C Major and A Minor. Each scale is written on a single staff in treble clef with a common time signature. The C Major scale starts on middle C and ascends to C5. The A Minor scale starts on A3 and ascends to A4.

F Major



This block contains the F Major scale, written on a single staff in treble clef with a common time signature, starting on F4 and ascending to F5.

D Minor B-flat Major



This block contains two scales: D Minor and B-flat Major. Each is written on a single staff in treble clef with a common time signature. D Minor starts on D3 and ascends to D4. B-flat Major starts on B-flat4 and ascends to B-flat5.

G Minor



This block contains the G Minor scale, written on a single staff in treble clef with a common time signature, starting on G3 and ascending to G4.

E-flat Major C Minor



This block contains two scales: E-flat Major and C Minor. Each is written on a single staff in treble clef with a common time signature. E-flat Major starts on E-flat4 and ascends to E-flat5. C Minor starts on C3 and ascends to C4.

A-flat Major



This block contains the A-flat Major scale, written on a single staff in treble clef with a common time signature, starting on A-flat4 and ascending to A-flat5.

F Minor D-flat Major



This block contains two scales: F Minor and D-flat Major. Each is written on a single staff in treble clef with a common time signature. F Minor starts on F3 and ascends to F4. D-flat Major starts on D-flat4 and ascends to D-flat5.

B-flat Minor



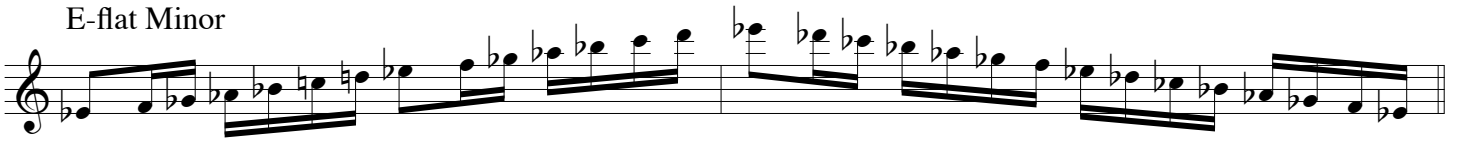
This block contains the B-flat Minor scale, written on a single staff in treble clef with a common time signature, starting on B-flat3 and ascending to B-flat4.

G-flat Major



This block contains the G-flat Major scale, written on a single staff in treble clef with a common time signature, starting on G-flat4 and ascending to G-flat5.

E-flat Minor



B Major



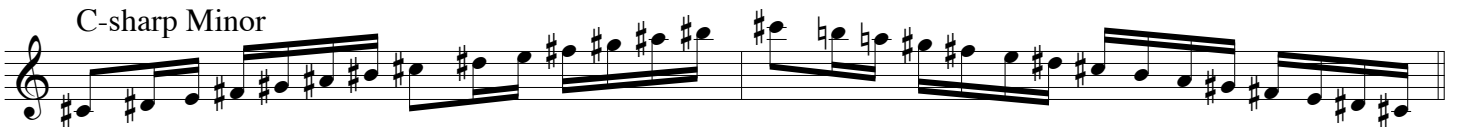
G-sharp Minor



E Major



C-sharp Minor



A Major



F-sharp Minor



D Major



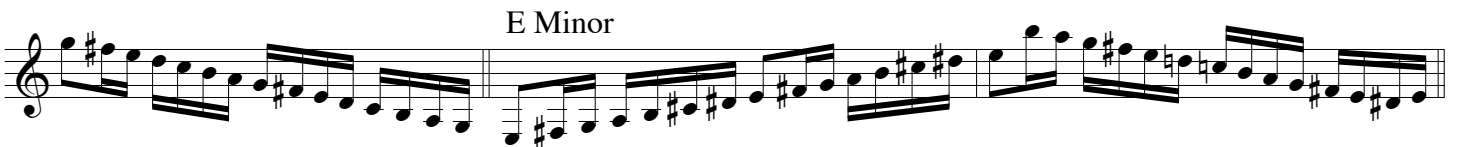
B Minor



G Major



E Minor



C Major

